

## **Eagle Plains Resources Ltd.**

*(EPL : TSX-V) has a 100% interest in an early-stage molybdenum project (Sphinx) located 60km west of Kimberley in Southeastern British Columbia.*

**The Sphinx deposit currently contains 47.8 million pounds of molybdenum from an inferred resource of 62MT grading 0.035% Mo.**

*The deposit is open in three directions and presents exceptional opportunity to expand the resource base.*



**Eagle Plains  
Resources Ltd.**

### Contact Information:

Eagle Plains Resources Ltd.  
Suite 200, 16 - 11th Ave. South  
Cranbrook, BC, Canada V1C 2P1  
1 866 Hunt Ore (866 486 8673)  
Email: [info@eagleplains.com](mailto:info@eagleplains.com)

**[www.eagleplains.com](http://www.eagleplains.com)**

## SPHINX MOLYBDENUM PROJECT

### **Project Highlights**

- Using results from a total of 29 drill holes (14 completed by EPL in 2004-2005) an inferred resource calculation has been made consisting of 62 million tonnes grading 0.035% using a cut-off of 0.01% Mo (47.84 million pounds of contained Mo). The mineralized zone is open to depth and in two direction.
- 4 step-out diamond holes (2500m) completed in October 2006 will be included in an updated resource calculation.
- Excellent infrastructure including roads and hydro power to the property.
- Total property area of 2500 hectares 100% owned by Eagle Plains Resources.

### **Project History**

The project area was first identified by Cominco Ltd. in 1978. 14 holes were subsequently drilled, with independent consultants noting that "typical drill intersections are averaging 0.03-0.038% molybdenum over core lengths ranging from 90 to 230m".

### **Eagle Plains Program – 2004-2006**

Since acquiring the property, EPL has completed geological mapping, geochemical sampling, an airborne geophysical survey, and drilled 18 holes for a total of 19,127' (5,830m).

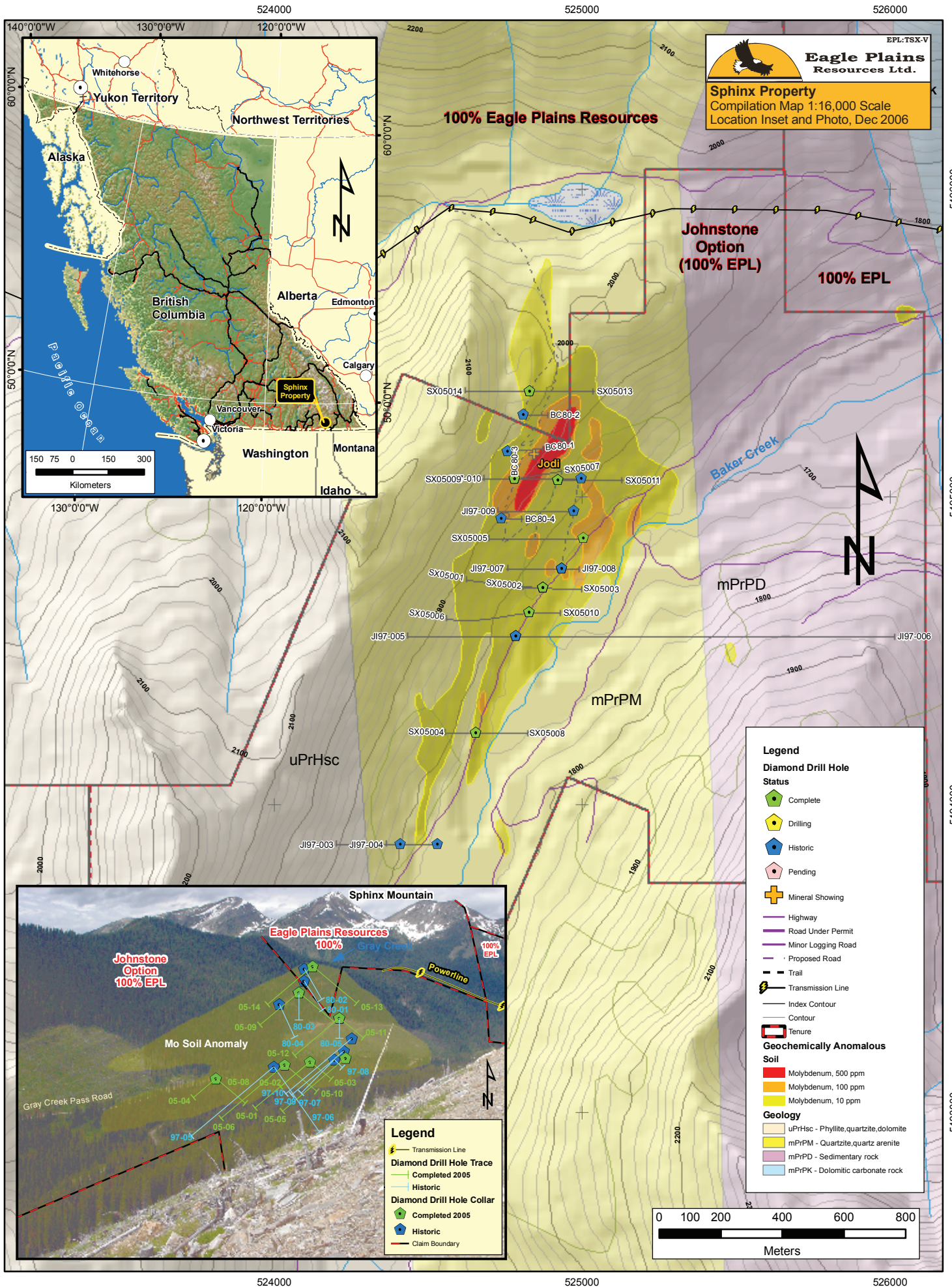
### **Eagle Plains Future Plans**

- Further definition of the inferred resource using the drill information from 4 holes drilled in late 2006.
- Diamond drilling program planned for the 2007 season.

### **Geology**

The property overlies brittle sedimentary units that have been intruded by granitic material. Molybdenum and associated tungsten mineralization occur as disseminations and within quartz-pyrite stockwork veins hosted by both sedimentary and intrusive rocks. Chemical alteration of rock units suggests the presence of a substantial porphyry-style mineralizing system.

A project summary and detailed maps may be viewed at [www.eagleplains.com](http://www.eagleplains.com)



EPL:TSX-V  
**Eagle Plains Resources Ltd.**  
**Sphinx Property**  
 Compilation Map 1:16,000 Scale  
 Location Inset and Photo, Dec 2006



**Legend**

**Diamond Drill Hole Status**

- Complete
- Drilling
- Historic
- Pending
- Mineral Showing

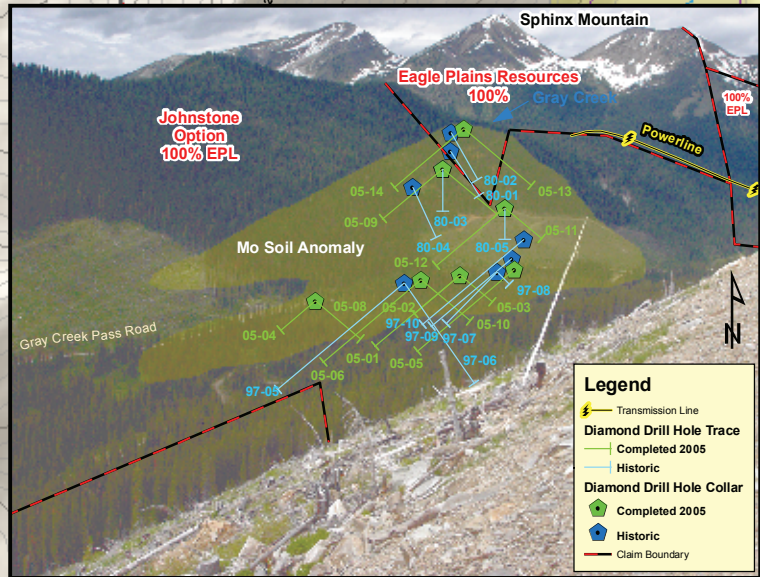
Highway  
 Road Under Permit  
 Minor Logging Road  
 Proposed Road  
 Trail  
 Transmission Line  
 Index Contour  
 Contour  
 Tenure

**Geochemically Anomalous Soil**

- Molybdenum, 500 ppm
- Molybdenum, 100 ppm
- Molybdenum, 10 ppm

**Geology**

- uPrHsc - Phyllite, quartzite, dolomite
- mPrPM - Quartzite, quartz arenite
- mPrPD - Sedimentary rock
- mPrPK - Dolomitic carbonate rock



**Legend**

- Transmission Line
- Diamond Drill Hole Trace
- Completed 2005
- Historic
- Diamond Drill Hole Collar
- Completed 2005
- Historic
- Claim Boundary

