

COYOTE CREEK (GYPSUM)

THE COYOTE CREEK property consists of 174 units (10,500 acres) located in the Lussier River/Coyote Creek area 50km NE of Cranbrook, BC. The Coyote Creek property area is distinguished by its abundant gypsum resources, and by high zinc values over the entire property area, reflected in soils, stream geochemical, and lithochemical samples. Interest



in the area dates back to 1991, when results of a BCGS regional geochemical sampling (RGS) program were released, indicating zinc values in the 99th percentile for the ridge forming the divide between the Lussier River and Coyote Creek. All drainages for this area showed highly anomalous zinc values, ranging from 380 ppm to a high of 5500 ppm Zn.

After cursory work was performed by Teck and Cominco during the early 1990s, claims were eventually allowed to lapse. Eagle Plains staked a large block of claims in early 1999, and after completing extensive soil sampling and mapping work, drilled two holes into prospective shale stratigraphy. A metal-enriched shale sequence, anomalous in

Ni – Zn – Cu – Ag, was successfully identified, but intersections were of subeconomic grade.

The Coyote Creek claims also cover gypsum occurrences hosted within the Burnais Formation. The Branch F West and Coyote Showings are exposed over widths of 25 – 30 meters and contain gypsum in excess of 87% purity. It is believed that the two showings are contiguous and are estimated to have combined tonnage potential in excess of 6 million tones of gypsum (Butrenchuk, S.B.; BCEMMPR Open File 1991 – 15). At this juncture, Eagle Plains shifted focus to developing the known gypsum occurrences on the property, with an aim to eventually extracting material for use in wallboard production. The gypsum occurrences are located along well maintained logging roads, with a nearby infrastructure corridor including hydroelectric power, major highways, and a railroad.

In 2005, Eagle Plains began evaluating the considerable gypsum resource on the Coyote Creek property. Gypsum in the Lussier River and Coyote Creek area was known prior to 1954, with commercial production of gypsum starting in 1984. The Lussier River area has seen significant production of industrial minerals in past years, owing to the presence of high-grade gypsum within evaporite beds of the Devonian Bernaise Formation. Domtar, Westroc, and Georgia Pacific currently operates quarries in the area, and hold claims contiguous to the Coyote Creek block.

In the area now covered by the Coyote Creek claims, S.B. Butrenchuk in 1989 discovered 3 significant new gypsum showings which were exposed by Forestry road construction. Butrenchuk described the geology and gypsum occurrences in the Coyote Creek and Lussier River drainages in open file 1991-15 published by the B.C. Geological Survey. 2005 work by Eagle Plains consisted of a 10 hole diamond drilling program in the area of the Branch F West occurrence. Nine of the diamond drill holes cored the gypsum deposit through to the underlying anhydrite formation, with an average gypsum thickness of 31 meters. Geochemical analysis of the gypsum indicates that it is of a very high purity. Based on the results from the 2005 drill program and a review of the technical paper prepared by S.B. Butrenchuk, further work, including diamond drilling, was recommended for the property.

In May – June, 2006 Eagle Plains completed a 13 hole, 540 meter diamond drilling program on the Coyote Creek property. The objective of the program was to expand the size of the gypsum mineralization defined in 2005 and to better define the

controls on the gypsum. The program successfully expanded the known gypsum resource and further work was recommended for the property, including diamond drilling.

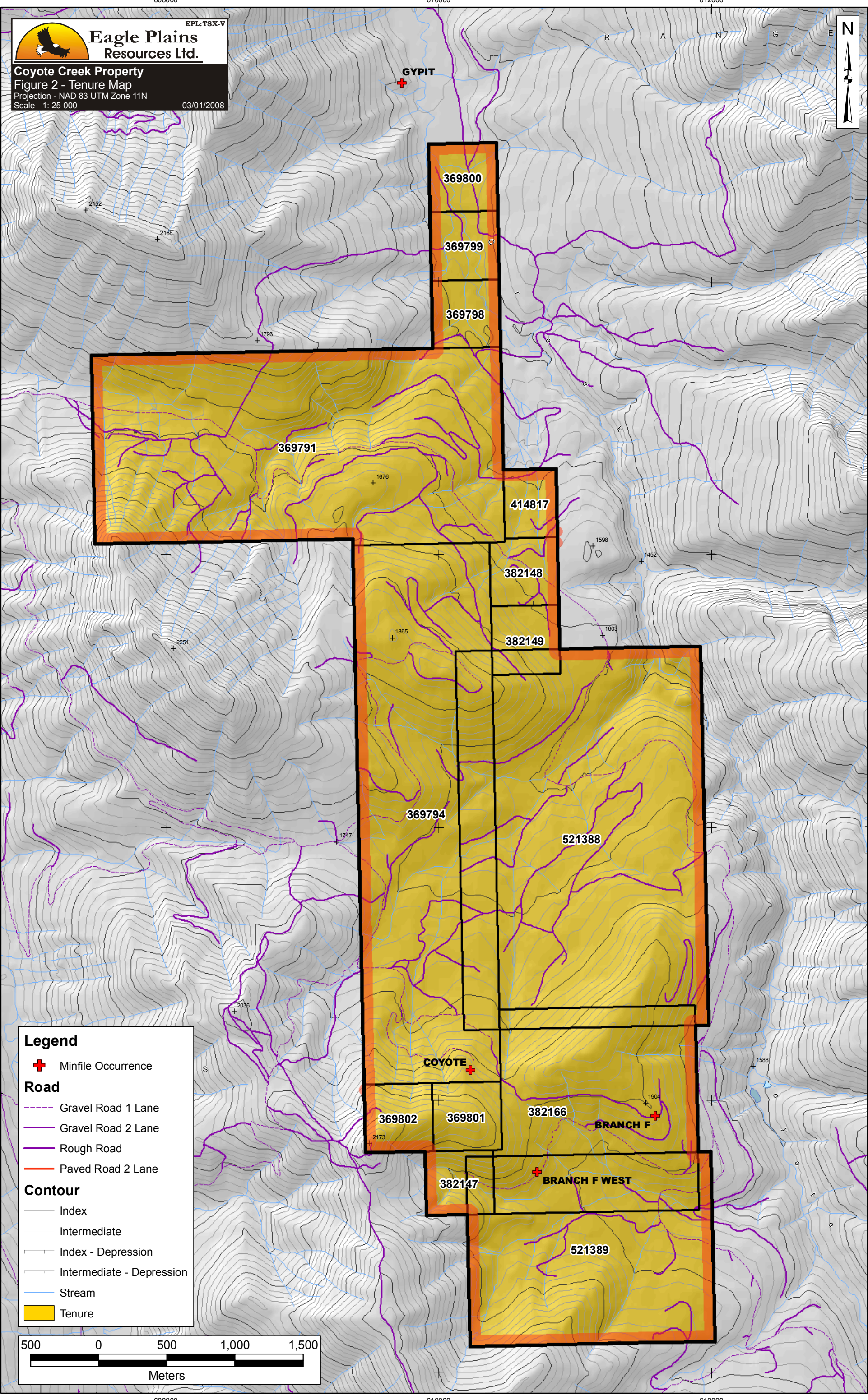
On October 02, 2006 Eagle Plains Resources Ltd. entered into a one year option-to-purchase agreement with CGC Inc. (a New Brunswick subsidiary). CGC Inc. could earn the right to acquire a 100% interest in the Coyote Creek property for CDN \$1,250,000. An initial amount of \$30,000 was paid for the right to evaluate the property. CGC Inc.'s parent company, US Gypsum Inc. of Chicago, Illinois, USA, notified Eagle Plains Resources Ltd. of the intent to conduct a diamond drill hole exploration program. A continuing sequence of drill holes was begun with drill hole CK06-14 collared on October 10. An eleven hole diamond drill program was carried out with the final drill hole completed on October 29. Eagle Plains Resources Ltd. was again commissioned to conduct a 23 drill hole program which was initiated on May 24 and completed on June 27, 2007. Drilling extended the reserve base westerly at the Branch F West area, and to the north within the Branch F area.

In November, after a verbal option extension agreement, CGC Inc. elected to decline purchase of the Coyote Creek property and terminated the option agreement. Influential factors as expressed by US Gypsum management included the declining US housing market and deflated US/CDN currency ratio.

This property is available for option and is a project of merit.

Updated January 15, 2009

Eagle Plains Resources Ltd.
Coyote Creek Property
Figure 2 - Tenure Map
 Projection - NAD 83 UTM Zone 11N
 Scale - 1: 25 000
 03/01/2008



Legend

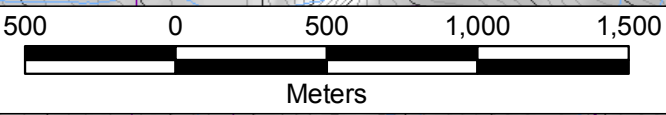
- + Minfile Occurrence

Road

- Gravel Road 1 Lane
- Gravel Road 2 Lane
- Rough Road
- Paved Road 2 Lane

Contour

- Index
- Intermediate
- Index - Depression
- Intermediate - Depression
- Stream
- Tenure



5544000
5542000
5540000
5538000
5536000
5534000

5544000
5542000
5540000
5538000
5536000
5534000

608000 610000 612000

608000 610000 612000